

prismERP

think global, be local



**Bringing your business
at your fingertips**

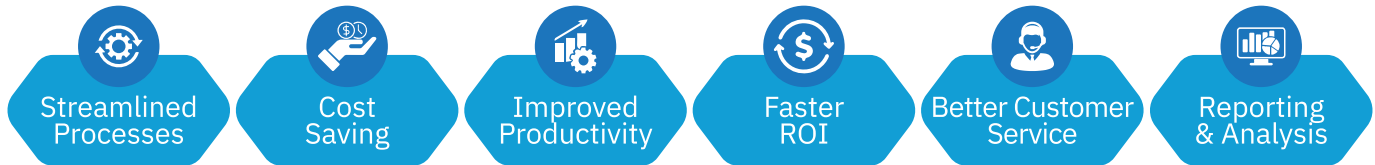


A product of
DIVINE IT LIMITED
Customer. Commitment. Technology.

www.prismerp.net

PrismERP is a platform independent, ready & integrated ERP system for multi-dimensional businesses mostly used as a “business operating system”. Since 2007, it has served numerous types of industries covering major business processes.

Benefits



Nativeness & Flexible User Interface

PrismERP's highly intuitive UI is praised by users along with its native culture in implementation & support



Integration & Interoperability

Web/e-Commerce, attendance/IoT/control devices, POS, VAT software and any external application can integrate with PrismERP's robust API



DATA Backup & Recovery

Diverse disaster recovery is achieved through automated backup to cloud servers or to failover clusters which ensures 100% data security

Mobility & Flexibility

Specialized mobile applications & web based access makes data readily available to users



Security & Compliance

Data is kept secured with built-in protections like two factor authentication, dynamic user access management, time/IP restriction, active directory support



Versatile Licensing & Pricing Model

A dynamic pricing & licensing infrastructure enables users to match & select functionalities according to business needs & budget in each process area



Customizations for Unique Business

When out of the box functionality is not enough PrismERP offers highly skilled team to meet unique business requirements

18+ years of Implementation Experience

18+ years of implementation success stories achieved through carefully tailored implementation plan for each individual business

Flexible Deployment Choices

HOSTING

ON PREMISE CLOUD
SHARED SERVER
DEDICATED SERVER

PLATFORM



DATABASE

MYSQL ORACLE
POSTGRES MSSQL

IMPLEMENTATION STEPS

PLANNING

Project planning & kickoff meeting, ensure both organizations are on the same page for the project

DEPLOYMENT

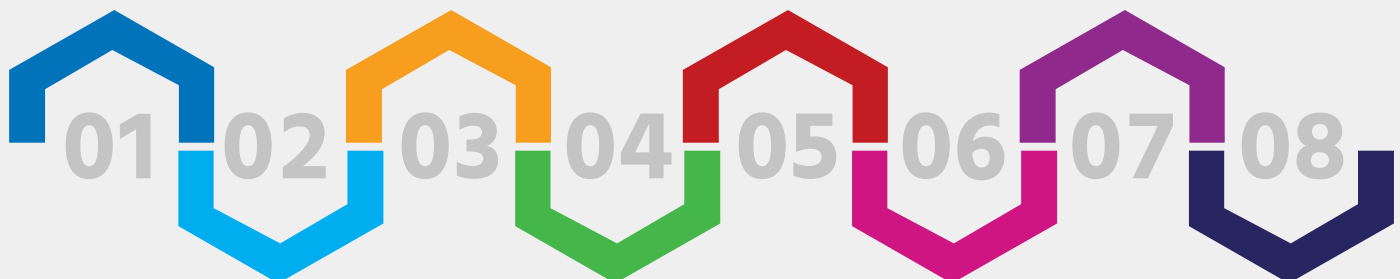
System commissioning, preparation, installation, PrismERP setup & configuration with foundation training

PREPARATION

Data preparation & migration define cutover, integrated CRP testing

HYPERCARE

Fine tuning and extensive support on post go live period to ensure successful implementation



BLUEPRINT

Business process modeling to determine how to best use different modules & define user roles

REALIZATION

Design, development, integration & testing for customized features, functional CRP testing

GO LIVE

End user training, user acceptance testing, phased rollout & system cutover

SUPPORT

After successful implementation & go live handover to support

Modules

Financial Management System

- FA Financial Accounting**
Generate expert accredited & regulatory compliant financial statements in seconds
- TR Treasury**
Make a proper plan for every payable & receivable
- CRD Card Receipt**
The card receipt module makes the processing life easier for credit/debit card payment charges by the bank
- EA Enterprise Asset**
Complete & dynamic application tracks all assets for any industries
- BUD Budgeting**
Draw up a master budget & track expenses in an instant
- MC Multi Currency**
Provision of financial ledgers & reports in multiple currencies
- BC Bill Claim**
Manage employee expense claims & disbursement
- LM Loan**
Hassle free management of loans & investment
- RB Receipt Books**
Prepare money receipts for customers
- CC Cost Center**
Allocate & track cost maintaining separate cost centers within the organization
- CB Cheque Books**
Issue & manage cheques for all relevant financial operations

Project System

- PM Project Management**
A platform to manage project of any scale
- PP Project Planning**
Plan & schedule projects tasks accurately with real-time gantt chart
- PA Project Accounting**
Separate project accounting to generate income statement
- PI Project Inventory**
Manage & track project wise inventory
- BOQ Project BOM**
Prepare specific BOM with transparent information

Core System Components

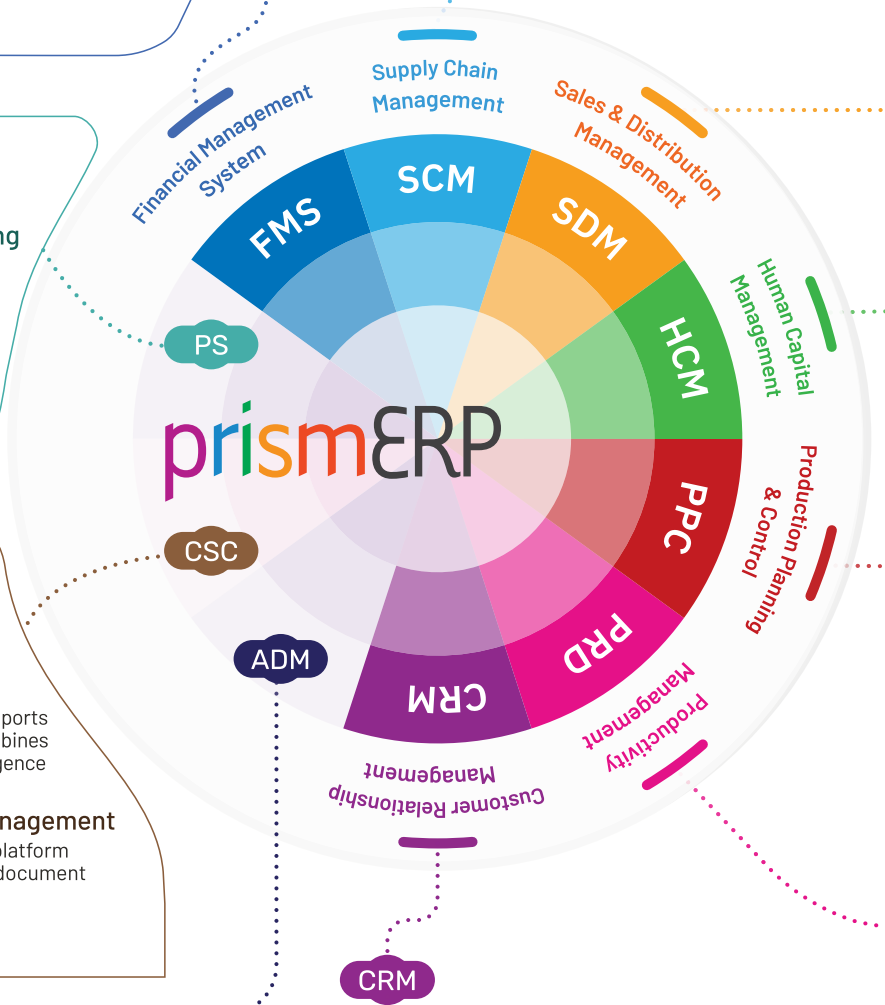
- COR PrismERP Core**
Core system includes in-built security components, privileged access management, configuration & system management toolkits
- BM Branch Management**
Provides flexibility for companies with multiple operational hubs which is located in different locations
- BI Business Intelligence**
Robust set of reports & analytics combines business intelligence
- CAS PrismCAS**
Industry standard single sign on authentication with additional security features
- DMS Document Management**
Fully flourished, platform ready & secured document storage solution
- BAC Backup**
Point in time backup for disaster recovery & business continuity

Office Administration

- LMS Library Management**
Library asset management for better inventory tracking
- FLM Fleet Management**
Maximize business profit & lower operational costs by proper management of your fleet
- DIS Dispatch Management**
Dispatch & track internal documents digitally & reduce paper waste
- VMS Visitor Management**
Manage appointments & schedules for all incoming visitors

Customer Relationship Management

- CRM Pre-Sales CRM**
Opportunity creation to customer onboarding – a complete sales funnel management
- STS Support Ticketing System**
A central system to answer all customer related tickets & support queries
- INV Billing/Invoicing**
Standard receivable invoice with automated accounting
- RMA Return Merchandise Authorization**
Manage returns & warranty claims from customers
- SB Service Billing**
Utilize robotic process automation to ease the billing process
- CP Customer Portal**
Automate customer service through comprehensive customer portal



Supply Chain Management

- PUR Purchase (Local & Foreign)**
Convenient solution for all stages of procurement
- DF Demand Forecasting**
Forecast upcoming sales trend & plan accordingly
- PD Purchase Delivery**
Detail delivery information with reference to purchase order/ invoice
- SCP Supply Chain Planning**
Demand to delivery Manage complete cycle of supply chain
- PQC Purchase Quality Control**
Maintain quality benchmark through extensive quality control
- SRM Supplier Relationship Management**
Maintain relationship with supplier reducing operational overhead
- IC Inventory Control**
Inventory with automated accounting system
- EP e-Procurement**
Automated sourcing & supplier management to streamline the procurement process
- RMA RMA - Purchase**
Purchase warranty claims & return management

SCM

- SL Sales (Local & Foreign)**
Manage sales & related shipment, auto inventory with export LC documents, CI, PI, CnF
- OM Order Management**
Efficient customer order tracking to ensure fulfillment
- SD Sales Delivery**
Delivery invoice preparation & tracking
- DM Dealer Management**
Equip dealers with powerful suite of tools for automation & managing sales channel
- SP Sales Promotion**
Multiple criterion based advanced sales promotion configuration
- ST Sales Target**
Features to provide & track sales target for sales person
- SIN Sales Incentive**
Outline the best sales incentive programme to reach organization's sales goal
- CM Commission Management**
Calculate commission against set criterias
- TM Territory Management**
Manage sales territories & territory wise sales professionals
- SSM Secondary Sales Management**
Track & manage dealers/ distributors stock, inventory & sold products
- CUS Customer Management**
Customer wise ledgers, transactions, documents & many more
- EMI Hire Sales**
Purchase agreement with customer & structured EMI calculation by taking into account the down payments
- FF Field Force Management**
End-to-end solution to gather & track records from field force
- SDM**

Sales & Distribution Management

HCM

- JOB Recruitment & Job Portal**
Excellent assistance in selecting deserving candidates
- TA Time & Attendance**
A centralized system to eliminate all paperwork for attendance & multiple data resources via PrismADC
- PAY Payroll**
Swiftly process employee earnings & deductions, complying with regulations
- EL Employee Loan**
Manage employee loan & advances

Human Capital Management

- PIM Personal Information Management System**
Manage information of employees & their relevant details
- ESS Employee Self Service**
ESS portal provides easy access to employee self service features
- PMS Performance Management System**
Performance management & self appraisal to ensure satisfactory result
- WFM Welfare Fund Management**
Effortlessly manage & update employees' welfare fund information.
- TS Training & Specialization**
Employee training management for better skill inventory
- TAX Employee TAX**
Income & withholding TAX management according to regulatory compliance
- PF Provident Fund & Gratuity Fund**
One stop provident & gratuity fund solution
- ATS Biometric Candidate Verification/Applicant Tracking**
Identify the real person through BCF/AT application
- FS Final Settlement & Exit Clearance**
Transparent settlement with employee during their exit

Productivity Management

- PRD PRD**
- TSK Task Management**
Comprehensive & integrated task management system
- WF Workflow Management**
Sequential & rule-driven workflow configuration for advanced process flow within the organization
- MOB Android Apps**
A 360° business operating system in the palm of your hands
- NS Notifications**
Always stay updated through real-time push notifications

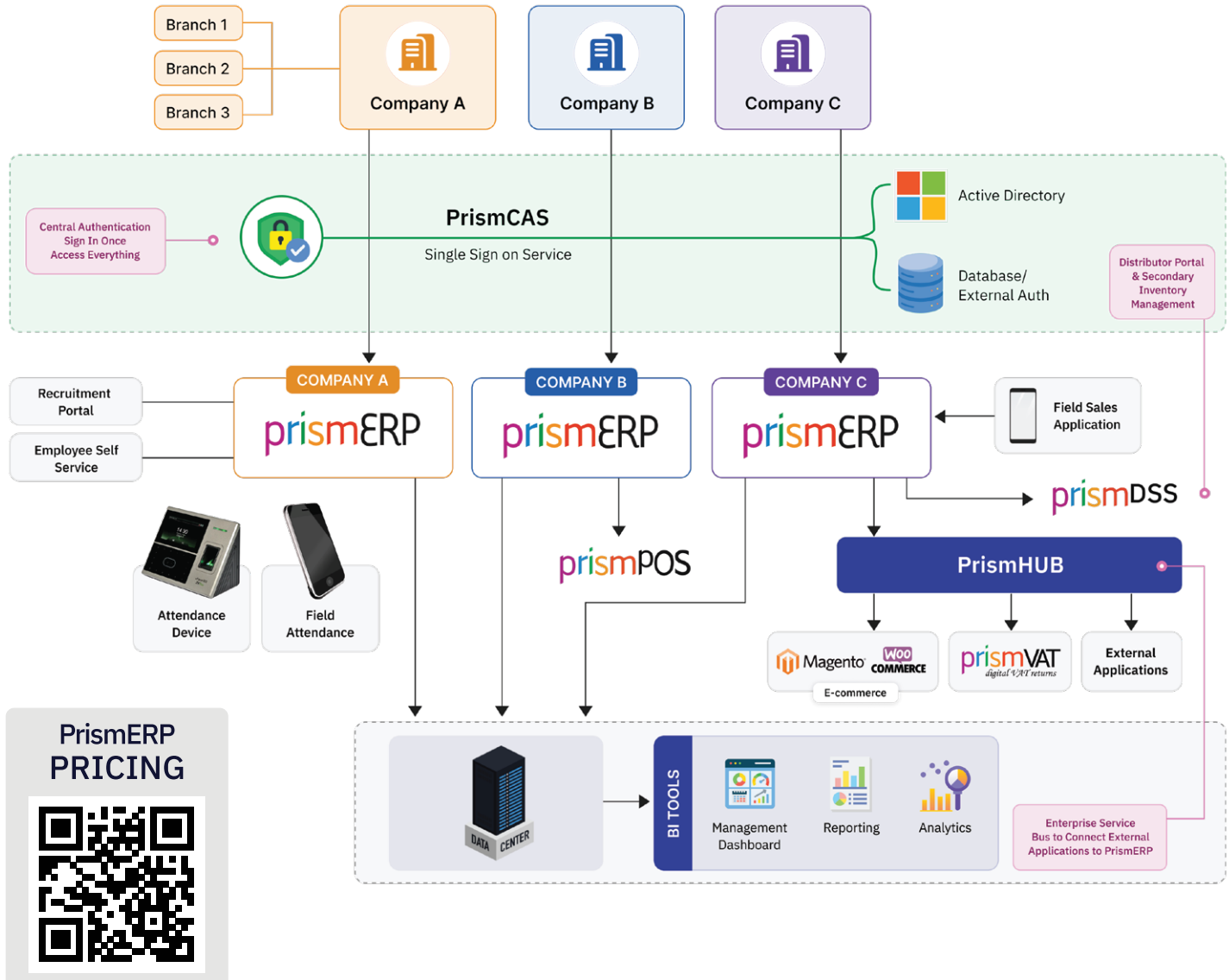
PPC

Production Planning & Control

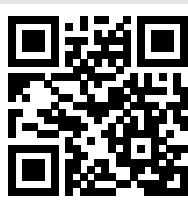
- PRO Production Management**
Keeping records from start to end of every manufacturing related works
- PPS Production Planning & Scheduling**
Production planning & intelligent scheduling utilizing every valuable seconds
- PMT Plant Maintenance**
Preventive & corrective maintenance
- MRP Material Requirement Planning**
Strategic & demand driven planning, scheduling & inventory control for systematic production
- QC Quality Control**
Assure top-notch quality as per customer demand & meet global standards
- PKG Packaging**
Systematic packing list with barcode
- SHL Shipping & Logistics**
Courier & packing list, shipment schedule management, automated data update

Solution Architecture

The architecture of PrismERP provides comprehensive interoperability & drill-down capability to manage system complexity in order to provide scalability & flexibility



PrismERP PRICING



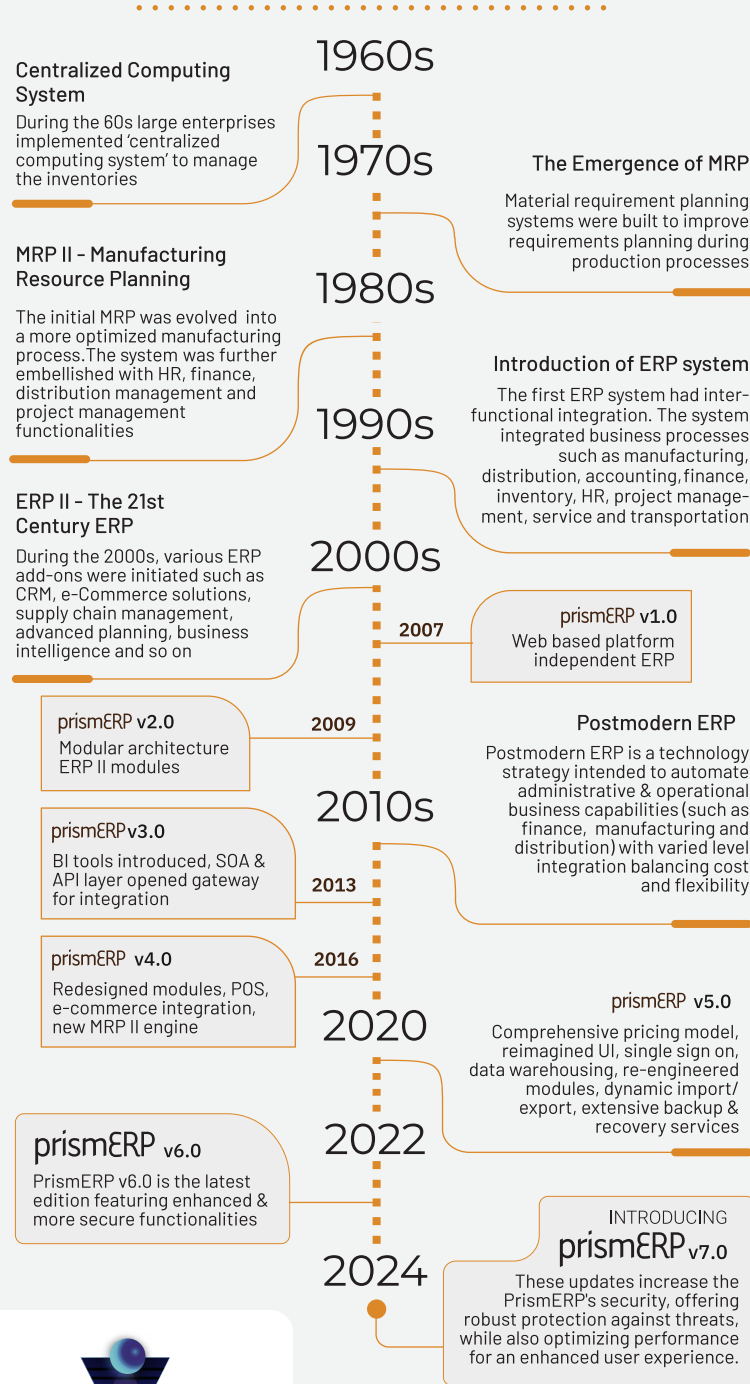
INDUSTRIES

Robust Business Solution to a Wide Spectrum of Industries

- | | | | | |
|-------------------|-----------------|-------------------|---------------------|---------------|
| Textile & Apparel | Agro | Retail | NGO/NPO | Manufacturing |
| Public Companies | Technology | Spinning | Real Estate | Distribution |
| Steel & Aluminium | Buying House | Supply Chain | Financial Services | Automotive |
| Power & Energy | Tiles & Ceramic | Foods & Beverages | Plastic & Packaging | Others.... |

The History of ERP & PrismERP

ERP systems were not always readily available for small & medium enterprises. Only large enterprises could afford the expensive legacy systems which could only manage the inventories & manufacturing requirements. Since then ERP systems have gone through intensive development & various modifications. Let's take a look at the evolution of the ERP system...



About Divine IT Limited

Divine IT Limited is an award winning software & IT consultancy firm, solely dedicated to improving businesses across the globe, through innovation & originality, since 2005. With a fortified team of ingenious tech-wizards, Divine IT Limited leaves no stones unturned in providing the most dynamic solutions catered to all types of client.

Divine IT Limited takes pride in assisting companies with their robust ERP system in Bangladesh and around the world. The company serves by the principle 'Customer, Commitment, Technology' & is positioned at the forefront of rendering high quality IT solutions to its client.

PrismERP - Transforming the Businesses



+880 1730071001
+880 9614661212
office@divineit.net
www.divineit.net

MEMBERS



ENLISTED BY



CERTIFICATIONS



Head Office

F. Haque Tower (Level 3)
107, Bir Uttam C.R Datta Road
Dhaka-1205, Bangladesh

STP

H 29, Road 12, Sector 10
Uttara, Dhaka-1230
Bangladesh



Private Software Technology Park